

## **2012 Neil Pryde CMWA Championships at Rondeau Yacht Club**

(June 28, 29 & 30, 2012)

### ***A little Q & A about Rondeau and the CMWA Championships event.....***

**Q: Where exactly is Rondeau?**

*A: The Rondeau community is located within the Municipality of Chatham-Kent ([www.chatham-kent.ca](http://www.chatham-kent.ca)), on the north-western shore of Lake Erie, minutes from the Highway 401 corridor. Driving time to Rondeau is approximately: 3 hours from Toronto, 1 hour from London, 1 hour from Windsor/Detroit, and 2 hours from Toledo.*

**Q: What is the Rondeau Yacht Club?**

*A: Rondeau Yacht Club (RYC) is many things to many people. First and foremost RYC is a family-oriented community centre where children (ages 4-16) learn how to sail, windsurf, swim, and canoe....and make friends for life. Please visit the RYC website ([www.rondeauyachtclub.ca](http://www.rondeauyachtclub.ca)) for a complete picture of what RYC is.*

**Q: Rondeau Yacht Club is inside a Provincial Park? Does this create any unique challenges for the CMWA Championship event?**

*A: The simple answers are yes, and yes. Rondeau Yacht Club is located within the administrative boundary of Rondeau Provincial Park ([www.rondeauprovincialpark.ca](http://www.rondeauprovincialpark.ca)). As such, those that partake in RYC programs and regattas are expected to enter through the park gates (and pay the park entry fee) and follow all park rules. For 2012, the daily park entry fee is \$16/vehicle (Ontario Senior \$13/vehicle), and unfortunately, there is no way to get around these fees. Seasonal passes are available (\$107.50) and allow entry into any Ontario provincial park for the period of April 1<sup>st</sup> – November 31<sup>st</sup>.*

**Q: Has the Rondeau Yacht Club ever hosted a windsurfing regatta before?**

*A: Yes – RYC has a lengthening history of hosting windsurfing regattas. RYC hosted its first windsurfing regatta around 2005 and has held an annual windsurfing regatta since. In 2010 RYC joined forces with OS/WC which put RYC on its summer regatta circuit, and this partnership has, and will continue.*

**Q: What is so special about Rondeau Bay?**

*A: The Regatta site is sailable in all wind directions, although a due easterly wind is straight off-shore. The prevailing winds are southwest, and the site is ideal in this direction. Water temperatures at this time of year are quite mild, with a bathing suit being the preferred attire (for most). The rigging area*

*is grass, with a sand shoreline, and sand bottom bay. (Please see attached aerial view of the Rondeau Bay area.)*

*It should be noted, and highlighted, that at this time of year, Rondeau Bay will likely have healthy weed growth present. As such, you should bring along a weed fin in case you feel the weeds may be an issue.*

**Q: So what will the CMWA weekend schedule look like?**

*A: A welcome social event and registration will take place at Rondeau Joe's on the Thursday evening, from 7-9 pm. For those wishing to register on the morning of, and prior to, the first race, registration will take place at Rondeau Yacht Club from 8 – 9:00 am on Friday. The Skipper's Meeting will convene at 9:30 am (sharp), and the first race will commence (at the starting line) at 10:30 am. It is proposed that two races will be run prior to breaking for lunch around 12 noon. It is further proposed that up to three course races be held in the afternoon, followed by a long-distance race (wind permitting). It is anticipated that the Friday races will wrap up and have everyone off the water no later than 5 pm. Following the racing, the group will leisurely make their way to Rondeau Joe's for a 7 pm supper.*

*The Saturday racing schedule is virtually identical to the Friday schedule, with the exception of the long-distance race being removed. In order to allow adequate time for de-rigging following the races, and travel to the Blenheim Golf Course for the CMWA awards banquet at 7 pm, it is proposed that the last start be no later than 3:30 pm.*

*It should be noted that the annual RYC/OS/WC race will also run in concert with Saturday portion of the CMWA event, using the same course and race committee. Those taking part in the RYC/OS/WC event and wish to join the group for supper at the golf course are more than welcome, with the caveat that they are expected to cover their own meal costs to the RYC/CMWA organizing committee.*

*It should be further noted that there is no racing planned for the Sunday, and RYC is not in a position to organize, or endorse, racing on the Sunday for 2012 due to a conflicting event taking place in the Rondeau community.*

**Q: When I come to Rondeau for the event, is there anywhere nearby for me to sleep?**

*A: There is camping available within Rondeau Provincial Park, but since the CMWA event coincides with the Canada Day holiday weekend, the campground tends to fill up rather quickly. As such, if you wish to camp, it is recommended that you reserve a campsite through the Ontario Parks reservation system ([www.ontarioparks.com](http://www.ontarioparks.com)). There are also a number of bed & breakfast establishments (<http://www.bbcanada.com/associations/rpbba/>) in the immediate area which have proven popular with past RYC regatta participants.*

Finally, there are a couple hotels/motels in the nearby towns of Blenheim and Ridgetown (each about 15 minutes away). The CMWA has reserved a block of rooms at the Howard Johnson hotel in Ridgetown ([www.hojo.com](http://www.hojo.com)).

**Q: What types of amenities are nearby?**

A: Rondeau is located in very much a rural area. The nearby small towns of Blenheim ([www.blenheimontario.com](http://www.blenheimontario.com)) and Ridgetown ([www.ridgetown.com](http://www.ridgetown.com)), each about a 15 minute drive from the regatta site, offer a number of small town amenities such as hotels/motels, full service grocery stores, main street shopping, pharmacy's, coffee shops and restaurants. The closest hospital is located in the city of Chatham, approximately 35 minutes from the regatta site.

**Q: The Thursday evening registration and social is located at some place called Rondeau Joe's - what is Rondeau Joe's and where is it located?**

A: Rondeau Joe's ([www.rondeaujoes.com](http://www.rondeaujoes.com)), the local restaurant/pub, is located immediately outside the gates of Rondeau Provincial Park. It is open for lunch and supper, and offers quite a good menu selection. Rondeau Joe's is about a 5 minute walk from the regatta site.

**Q: The Saturday evening CMWA awards dinner is being held at a local golf course – what is the course called and how far away is it?**

A: The awards banquet is being held at the Blenheim Community Golf Course ([www.blenheimgolfcourse.com](http://www.blenheimgolfcourse.com)), and is located about a 10 minute drive from the regatta site.

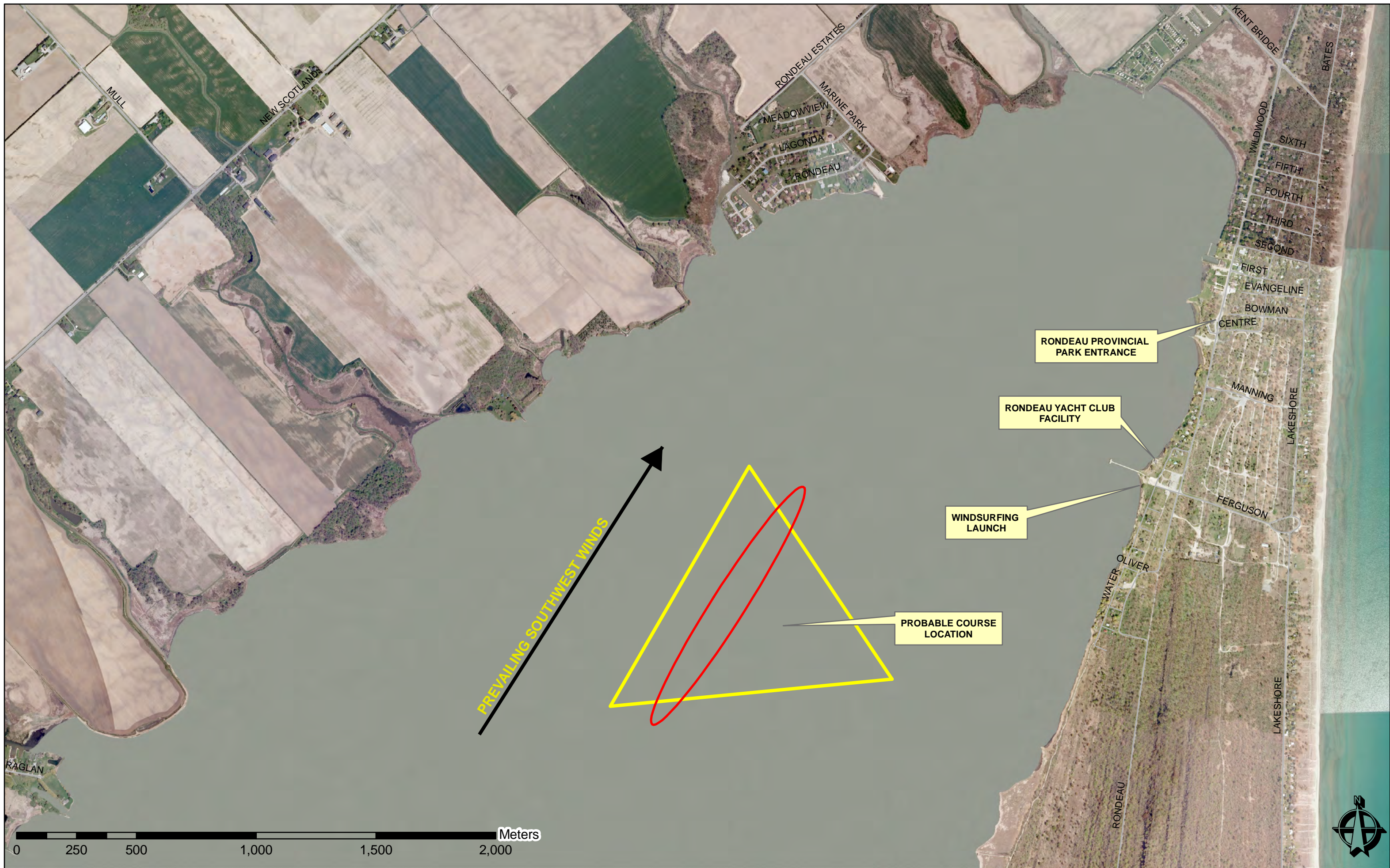
**Q: When will the Notice of Race (NOR) be available and where can I find it?**

A: There are a couple outstanding budget issues currently being worked out in regards to the Notice of Race. The NOR will be available and forwarded to all CMWA members no later than May 20<sup>th</sup>. In addition, the NOR will be available on the CMWA website ([www.windsurf.ca](http://www.windsurf.ca)) following May 20<sup>th</sup>. Registration information will be available as part of the NOR.

**Q: Who can I call or email for more information about the event?**

A: Please feel free to call David French (RYC regatta organizer) at 519-365-5819, or email him at [rondeauyachtclub@gmail.com](mailto:rondeauyachtclub@gmail.com). He will do his best to respond in a timely manner and answer your questions.





NEW SCOTLAND

RONDEAU ESTATES

MEADOWVIEW  
LAGONDA  
RONDEAU

MARINE PARK

KENT BRIDGE

BATIES

WILDWOOD  
SIXTH  
FIFTH  
FOURTH  
THIRD  
SECOND

FIRST  
EVANGELINE  
BOWMAN  
CENTRE

RONDEAU PROVINCIAL  
PARK ENTRANCE

RONDEAU YACHT CLUB  
FACILITY

WINDSURFING  
LAUNCH

PROBABLE COURSE  
LOCATION

MANNING  
LAKESHORE

FERGUSON

WATER  
OLIVER

LAKESHORE

RONDEAU

RAGLAN

0 250 500 1,000 1,500 2,000 Meters

